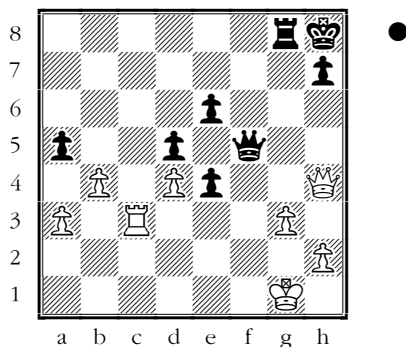


Test Yourself!

Jurcik (2510) – Papaioannou(2630)
 11th EICC Men Rijeka CRO (7), 2010



World Chess News

Amber Tournament

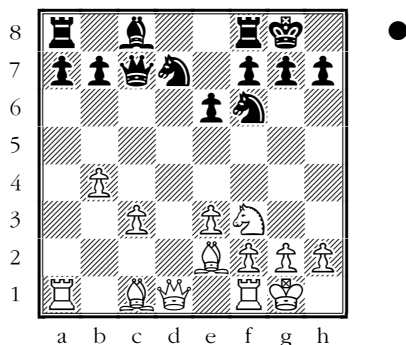
by GM Mikhail Golubev

We will deal with round 2 games and results in our next issue.

Speaking about the first day, I propose to focus on the interesting game between Aronian and Karjakin.

Aronian (2782) – Karjakin (2725)

1.d4 ♟f6 2.c4 e6 3.♟c3 ♘b4 4.e3 0-0 5.♙d3 d5 6.♟f3 c5 7.0-0 dxc4 8.♙xc4 ♟bd7 9.a3 cxd4 10.axb4 dxc3 11.bxc3 ♜c7 12.♙e2 (D)



12...♟d5

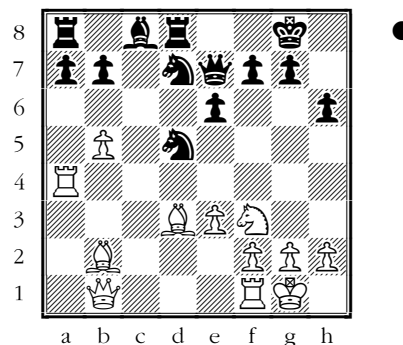
12...♜xc3 13.♙a3 ♟d5 was a move order in the 2000 game Kramnik and

Kasparov; the text was introduced in the early 2000s

13.♙a3!?!N ♜xc3

Now the game returns to a known path. After 13...♟xc3 14.♞c1! White's initiative is worth more than Black's extra pawn.

14.♜b1 ♜f6 15.♙d3 h6 16.b5 ♞d8 17.♙b2 ♜e7 18.♞a4 (D)



18...b6N

18...♟c5 19.♙h7+ ∞ Kramnik–Kasparov, London Wch (12) 2000, CT-319.cbv.

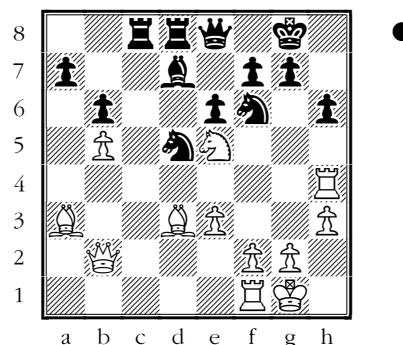
19.♙h7+ ♜h8 20.♞h4 ♟7f6?!

Black could have tried 20...e5! with the idea of 21.♙e4 ♘b7 22.♞d1 ♟c5! ⇒ 23.♟xe5?! ♟c3!! 24.♙xc3 ♙xe4=.

21.♟e5! ♙d7 22.♙a3 ♜e8 23.♙d3

Black has an unpleasant position now.

23...♞ac8 24.♜b2 ♜g8 25.h3!?! (D)



25...♞c3

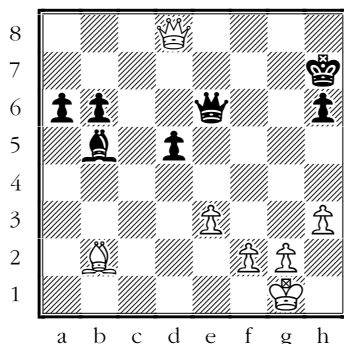
If 25...♟c3 26.♞c1 ♟fd5 27.e4 ♘a4 28.♜d2 ♞xc1+ 29.♜xc1=.

26.♞d1 ♞dc8!?! 27.♞d4!?! ♞xd3!

28.♞1xd3 ♙xb5 29.♞d2

Two pawns for the exchange are not enough here. White is still better.

29...a6 30.♘g4 ♘xg4 31.♖xg4 f6
 31...g6 looks scary for Black as it
 weakens the dark squares.
 32.♖xd5! exd5 33.♖xf6 ♖d7
 34.♖xg7+ ♖xg7 35.♖e6+ ♖h7
 36.♖f5+ ♖g6 37.♖xc8 ♖c6
 38.♖d8 ♖e6 39.♙b2 → (D)



39...a5?

In this difficult ending for Karjakin he blunders.

40.♖h8+ ♖g6 41.♖g7+ ♖f5
 41...♖h5 loses to 42.g4+ ♖h4 43.♙f6+
 (or 43.♖h2)
 42.♖g4# 1-0.

[Official website](#)

Karpov Press Conference

As we informed in CT-3403 Anatoly Karpov announced in Saratov, Russia that he is planning to fight for the FIDE Presidency later this year.

Yesterday *Chess Today* received the following press-release from the press centre of the ongoing European Championship:

Press release

Rijeka, March 12th, 2010

Ex World Champion visited [the] 11th European Individual Men and Women's Chess Championship

Karpov announced his candidature for the FIDE president

Today a press conference was held during the visit of the Ex World Champion Anatoly Karpov at the 11th European Individual Men and Women's Chess Championship in Rijeka.

The meeting was attended by Grandmaster and journalist Vlado Kovačević, the president of the Executive Committee Damir Vrhovnik and one of the best chess players of all time Anatoly Karpov. It is important to mention that this conference was transmitted live through the official Championship web site.

The introduction was given by the Grandmaster and journalist Vlado Kovačević who explained the importance of the arrival of one of the most important chess figures in the history at this Championship in Rijeka.

Karpov was welcomed by the president of the Executive Committee Damir Vrhovnik who pointed out that it is an exceptional honour and pleasure to host a worldwide famous chess player whose arrival represents a great recognition for the organizers and also for Rijeka and Croatia.

Grandmaster Karpov announced his candidacy for the presidency of the World Chess Federation and pointed out that he is ready to use his chess fame around the world. He said that if he became the president, his first step will be the Federation's reorganization as well as finding major sponsors that will allow accrue more efficient FIDE activities. Karpov considers that it is necessary to remove the current negative FIDE image in the world, and that the main thing is to respect our own rules.

He noted that by now he founded numerous chess schools and clubs all over the world, and than he recalled the times when he was the world's leading chess player. On the question of how to restore the old glory of chess, Karpov said that the national federations must highlight the big names of world chess so they could obtain new sponsors.

"I was at Croatia 30 years ago, and the organization of this Championship in Rijeka delighted me.

The organizers provided ideal conditions for a large number of players and so I congratulate them for the excellent organization", Karpov said.

Europe Échecs Interviews

The Europe Échecs video interview with Anatoly Karpov can be watched at ChessBase.com.

GM Robert Fontaine from Europe Echecs [spoke](#) also to candidates to run for President of the European Chess Union: Ali Nihat Yazici and Silvio Danailov.

Danailov also said that at the World Championship match against Anand "Topalov will not accept or offer draws".

Belgrade, Serbia

The 42nd Belgrade Women's Tournament 2010 took place on 3-11 March 2010.

Final standings:

1-2. WGM Voiska (BUL, 2320) and WFM Eric (SRB, 2183) - 6½
3-4. WGMs Grabuzova (RUS, 2347) and Benderac (SRB, 2299) - 6 etc. (10 players).

The Week in Chess has [all details](#).

[Official website](#)



Annotated Game

by GM Mikhail Golubev

White: M. Golubev (2492)

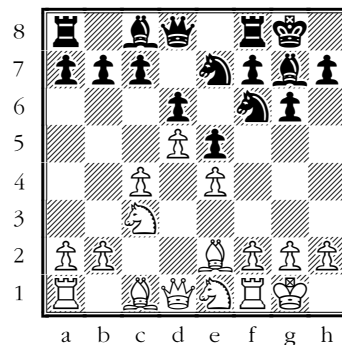
Black: E. Berdiugina (2111)

OGASA Geller-85 Clock Simul Odessa UKR, 11.03.2010

On 11 March 2010 in an event, devoted to 85 years since GM Geller's birthday, the team of Odessa journalists played against the team of the Odessa State Academy of Civil

Engineering and Architecture (OGASA). Like in the Pioneer Palaces USSR competitions, IM V.Makarov of OGASA played a simul. against five journalists, while I was giving a simul. to the OGASA team: four master candidates rated between 2111 and 2284 and one unrated master candidate. So I consider +2 =3 as a good result, I could even fight for more in the last (drawn) game, but as Makarov defeated my poor teammates with a score +4 =1 there was not much sense to try. In simul, Makarov and I had 1 hour 15 minutes for each game, and our opponents had 45 minutes for the game. (More details about the event in Russian can be found at chessportal.od.ua).

1.e4 g6 2.d4 ♖g7 3.c4 d6 4.♗c3 ♗f6 5.♙e2 0-0 6.♗f3 e5 7.0-0 ♗c6 8.d5 ♗e7 9.♗e1 (D)



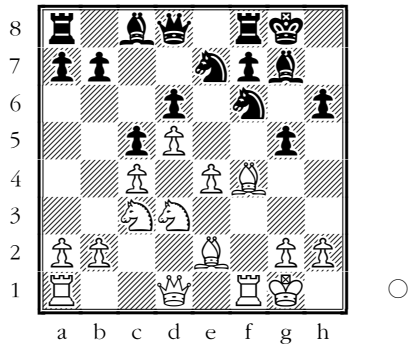
9...c5

This move, which was sometimes used by GM Uhlmann, is considered to be dubious because White quickly develops the initiative by f2-f4.

10.♗d3

COMP Fritz5/P200 MMX-Golubev, Melle Sparkassen Open rapid 1998 was a nonsense game, which continued 10.dxc6?! bxc6 11.b4 d5 12.♗g5 d4?! 13.♗xf6 ♗xf6 14.♗a4 ♗g7 15.♗c5 h5 16.f4! exf4 17.♗ed3 h4 18.♗xf4 a5? 19.b5 cxb5 20.cxb5± a4 21.♗b1 ♗h6 22.♗f1 ♙e3+ 23.♗h1 f5 24.♗f3 fxe4 25.♗xe4 ♗f5 26.♗xa8?? (26.g4!+-) 26...♗g3+ 27.hxg3 hxg3 28.♗xf8+ ♗xf8 29.♗d5+ ♗h8 30.♗h5+ gxh5 0-1. The immediate 10.f4! is possibly the most precise.

10...h6!? 11.f4 exf4 12.♗xf4 g5 (D)



13. Qxd6N

After 13. Qg3 Qg6 Black's plan is ...R8 while after 14. e5 dxe5 Δ 15. Qxe5 Qxd5! Δ 16. Qxf7 Qxc3 17. Qxd8 Qd4+! 18. Qh1 Qxd1 19. Rxf8+ 19... Qxf8! 20. Rxd1 Qe6! 21. Qxe6 Qxe6 and Black is fine

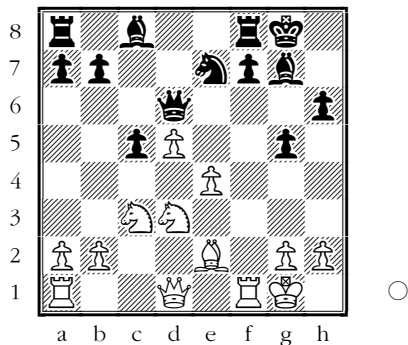
13... Qfxd5!

Not 13... Qxd6? 14. e5+- and White wins, for example: 14... Qa6 15. exf6 Qxf6 16. Qxc5 Qb6 17. Q3a4!

14. cxd5!?

The alternative was 14. exd5 Qxd6 15. Qe4!? but I did not want to leave Black with a strong dark-squared bishop, even if White prevails in the center.

14... Qxd6 (D)



15. e5?!

Objectively something else, e.g., 15. Qb3!? could have been stronger.

15... Qd8?!

After 15... Qxe5! 16. Qxe5 Qxe5 17. d6 R8d8! 18. Qb3 Qf5! (18... Qe6?! 19. dxe7 Qxb3 20. exd8 Q+ Rxd8 21. axb3↑) I hoped that there will be 'something' for White, but there is no more than enough play for a pawn: 19. Qc4 Qe6 (19... Rf8∞ is more complex) 20. Qxe6 Qxe6 and now 21. Qxb7 with approximate equality (rather than 21. Qd5 Qd4! 22. Qe7+ ♣)

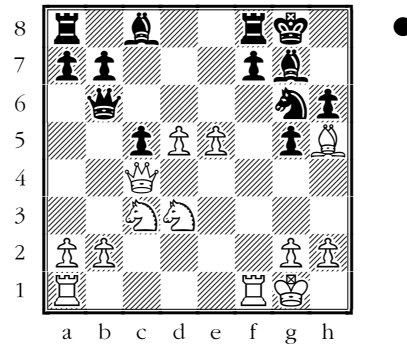
16. Qb3

Not especially clear at the first glance also is 16. d6 Qc6!? - indeed the question already is how big is White's advantage.

16... Qb6!? 17. Qc4!?

After 17. d6 Qc6 18. Qd5 Qxb3 19. axb3 Qxe5 20. Qxc5± White probably does not have much.

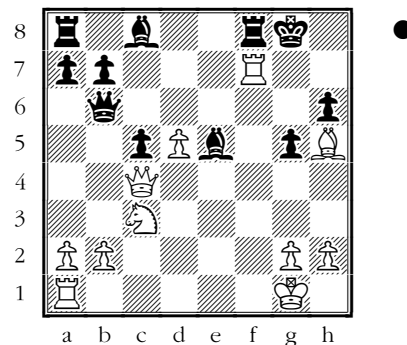
17... Qg6! 18. Qh5!? (D)



18... Qxe5?

Black should have played 18... Qxe5! and if 19. Qxg6 (19. Qa4!?±) 19... Qd4+ 20. Qh1 Qxg6 (not 20... fxg6? 21. d6+ Qg7 22. Rxf8 Qxf8 23. Re1!?) 21. Qxc5 Qg7∞ with a complicated fight.

19. Qxe5 Qxe5 20. Rxf7! (D)



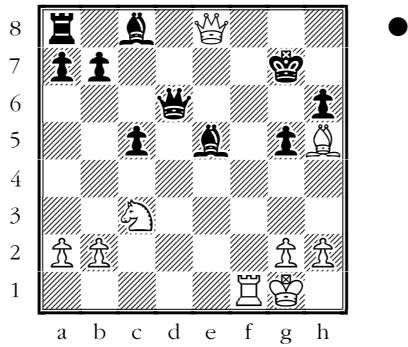
20... Rxf7

More stubborn was 20... Qf5! 21. d6 Qh8 though Black is anyway in serious trouble after 22. Rf1±

21. d6 Qxd6 22. Qxf7+ Qh8 23. Qe8+ Qg7

Not really better is 23... Qh7 24. Rf1 Qg7 25. Qf7 h5 26. Qg8+ Qh6 27. Qd5!+-

24. Rf1+- (D)



24...♙xh2+

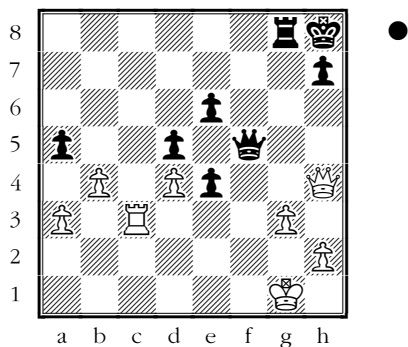
Also after 24...♙f4 25.♞e1!+- wins quickly (White only needs to avoid 25.♜f7+ ♝h8 26.♙g6? ♜d4+ 27.♝h1 ♜g7 but I saw this trick.)

25.♝h1 ♙f4 26.♜f7+ ♝h8 27.♙g6 1-0.

Solution to our Quiz:

Jurcik (2510) – Papaioannou(2630)

11th EICC Men Rijeka CRO (7), 2010



33...e3! 33...♞f8? 34.♜f4, 33...axb4 34.♞c7 (34.axb4 e3!) 34...♞f8 35.♜f4+ 34.♞xe3 ♞f8 34...♞f8 35.♜f4 ♝b1+ 0-1.

Contact information. Have some comments about Chess Today? [E-mail us](#) – we appreciate your feedback! **Chess Today** is published by Alexander Baburin, 3 Eagle Hill, Blackrock, Co. Dublin, Ireland. Tel: (353-1) 278-2276. Fax: (353-1) 283-6839. E-mail: ababurin@iol.ie Website: <http://www.chesstoday.net> Editors: GMs Baburin, Scherbakov and Golubev, IMs Barskij and Notkin. Technical editors: Graham Brown and Ralph Marconi.

Chess Today is copyright 2000-2010 by Alexander Baburin and protected intellectual property under the International Copyright convention. Subscribers are allowed to non-commercially distribute copies of Chess Today at their chess club, chess tournaments and via e-mail (on an occasional basis). Any other use and distribution (reproduction, via print, electronic format, or in any form whatsoever), as well as posting on the Web, is strictly prohibited without express written permission.