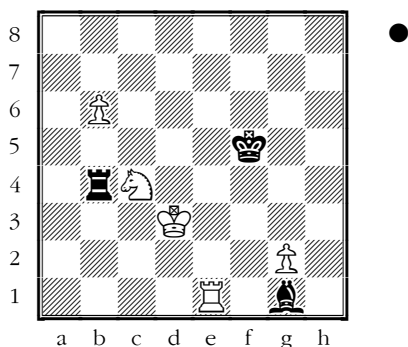


Test Yourself!

T.Kosintseva – Koneru

4th WGP Kazan 2012 (5), 15.06.2012



World Chess News

Women Grand Prix, Kazan

After 5 rounds, Elina Danielian and Anna Muzuchyk are leading with 3½ points.

[Official website](#)

Tal Memorial, Moscow

Standings after 6 rounds:

- 1-2. Morozevich and Kramnik – 4,
 3-5. Radjabov, Carlsen and Caruana – 3½,
 6. Nakamura – 3,
 7-8. Grischuk and Aronian – 2½,
 9. McShane – 2,
 10. Tomashevsky – 1½.

June 15 is a free day at the tournament.

Round 7 (June 16) pairings:

Radjabov – Caruana
 Aronian – Grischuk
 Nakamura – Carlsen
 Tomashevsky – Morozevich
 McShane – Kramnik

[Official website](#)

The World Blitz Ch Controversy

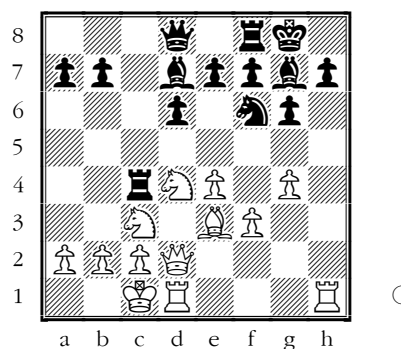
The [Chessvibes](#) website and Ruslan Ponomarev in his [blog](#) at the same website are discussing the fact that those Grandmasters who, as announced already, have [qualified](#) for the World Blitz Championship, are not invited to play in this [championship](#), which is scheduled to take place in early July in Astana, Kazakhstan.

The Sicilian Dragon – A new move in an old line

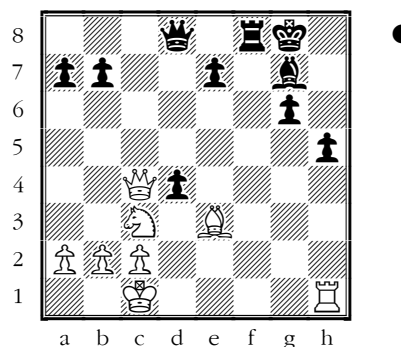
by GM Mikhail Golubev

Sicilian, Dragon, Yugoslav attack; B78

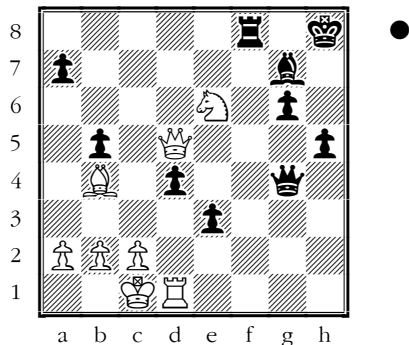
1.e4 c5 2.♘f3 d6 3.d4 cxd4 4.♘xd4
 ♘f6 5.♘c3 g6 6.♙e3 ♙g7 7.f3 0-0
 8.♚d2 ♘c6 9.♙c4 ♙d7 10.h4 ♜c8
 11.♙b3 ♘e5 12.0-0-0 ♘c4
 13.♙xc4 ♜xc4 14.h5 ♘xh5 15.g4
 ♘f6 (D)



16.e5 ♘xg4 17.fxg4 ♙xg4 18.♙dg1
 dxе5 19.♜xg4 h5 20.♚e2 exd4
 21.♜xg6 fxg6 22.♚xc4+ (D)



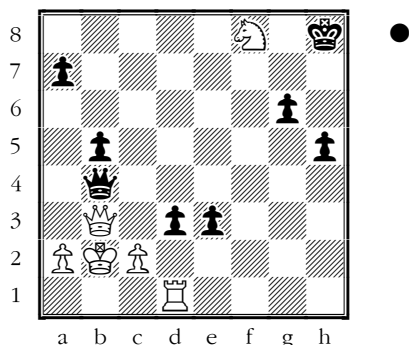
22...♖h8 23.♞d1 e5 24.♗e4 ♕h4
 25.♗g5 ♖g4 26.♙d2 e4 27.♗e6 e3
 28.♙b4 b5 29.♖d5 (D)



Recently, while preparing a small article in Russian (chess-news.ru/node/7826), I looked again at this position, which occurred in the Vitomskis-Koifman, corr. 1985 game (published in the Chess Informant at the time). With the help of the engine Stockfish, it turned out that my improvement, found, in the 1980s,

29...d3

works after all. The point is that after **30.♗xf8 ♙xb2+ 31.♖xb2 ♖xb4+ 32.♖b3 (D)**

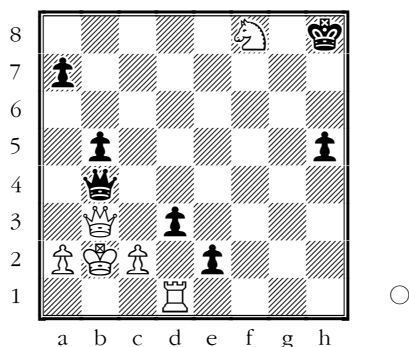


Black plays

32...e2!!

immediately. Not 32...♖xb3+? 33.cxb3 e2 34.♗xg6+ ♖h7 35.♗f8+ ♖h8 36.♖c1 exd1♖+ 37.♖xd1 which I analysed in the 1980s. I wrote about it in CT-3100.

33.♗xg6+ ♖h7 34.♗f8+ ♖h8! (D)



And White does not seem to have any winning chances, absolutely nothing.

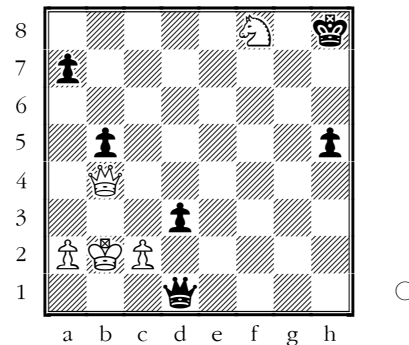
This issue is prepared by GM Mikhail Golubev; technical editor: Graham Brown

Subscription is 15 euro for 3 months. For further details please refer to <http://www.chesstoday.net>

35.♖xb4

35.♞g1 ♖xb3+ followed by d2 =.

35...exd1♖ (D)

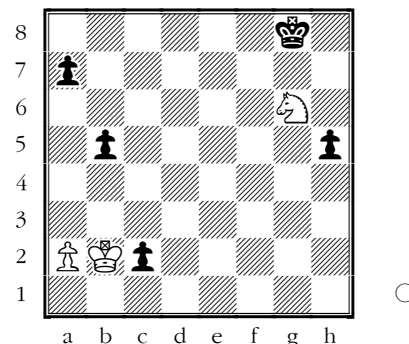


And here, for example,

36.♖c3+

After 36.cxd3 the simplest is 36...♖e2+ 37.♖c3 ♖e1+!

36...♖g8 37.♗g6 ♖xc2+ 38.♖xc2 dxc2= (D)



with an easy draw. So, not only 22... ♖h7 23. ♞d1 ♖b8! but also the 22... ♖h8 line may be playable for Black after all.

Solution to our Quiz:

T.Kosintseva - Koneru

83...♙xb6! 84.♖c3 ♞b5! 84...♙c5? 85.♞e5+ 85.♗d6+ ♖g5!= 86.♞e6 86.♗xb5 ♙a5+ 86...♞b1 87.♗c4 ♙c7 88.♖d3 ♞g1 89.♞e2 ♙f4 90.♖e4 ♖g4 91.♗b6 ♖g3 92.♗d5 ♞xg2 93.♗xf4 ♞xe2+ 1/2-1/2

Contact information. Have some comments about Chess Today? [E-mail us](mailto:ababurin@iol.ie) - we appreciate your feedback! **Chess Today** is published by Alexander Baburin, 3 Eagle Hill, Blackrock, Co. Dublin, Ireland. Tel: (353-1) 278-2276. Fax: (353-1) 283-6839. E-mail: ababurin@iol.ie Website: <http://www.chesstoday.net> Editors: GMs Baburin, Scherbakov and Golubev, IMs Barskij and Notkin. Technical editors: Graham Brown, Ivan Baburin and Ralph Marconi.

Chess Today is copyright 2000-2012 by Alexander Baburin and protected intellectual property under the International Copyright convention. Subscribers are allowed to non-commercially distribute copies of Chess Today at their chess club, chess tournaments and via e-mail (on an occasional basis). Any other use and distribution (reproduction, via print, electronic format, or in any form whatsoever), as well as posting on the Web, is strictly prohibited without express written permission.