

Commonwealth Ch. Chennai

Round 11 top pairings:

Tiviakov (8½) – Narayanan (8½)

Lalith (8½) – Karthikeyan (8½)

[Chess-Results](#)

The 2nd Odessa Chess TV Program

by GM Mikhail Golubev

The second chess TV program by TRC Krug (November 30) can be [viewed on Youtube](#). The main story is the interview with GM Natalia Zhukova who returned to Odessa from the Khanty-Mansiysk women's world championship. In the beginning of the program, three attractive combinations from Zhukova's past games are examined by the program's host FM Ivan Yurkovskiy and his pupil, the young Odessa player. The program is in the Russian language.

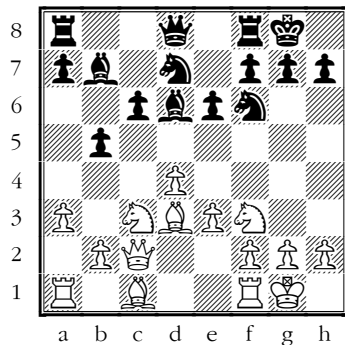
Annotated Game

by GM Mikhail Golubev

Stefanova(2491) – Ushenina (2452)

Women's World Ch. Khanty-Mansiysk (4), 2012; *Semi-Slav*; [D46]

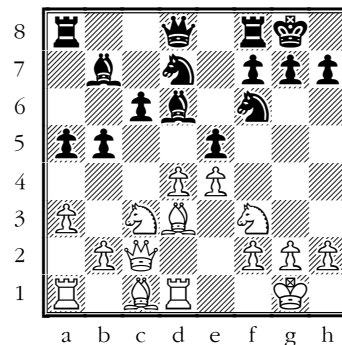
1.d4 d5 2.c4 c6 3.♘c3 ♘f6 4.e3 e6
5.♗f3 ♗bd7 6.♚c2 ♙d6 7.♙d3 0-0
8.0-0 dxc4 9.♙xc4 b5 10.♙d3 ♙b7
11.a3 (D)



11...a5

The most popular move is 11...a6

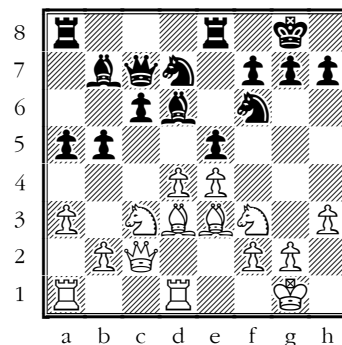
12.e4 e5 13.♙d1!? (D)



Instead of the common, for this particular position, exchange on e5, White just develops a rook. Stefanova had already played like this in the championship.

13...♚c7

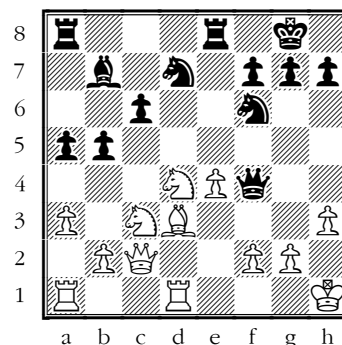
In round 4 game Stefanova-Sebag there was 13...♙c8 14.h3!?!N ♚e7
14.h3 ♙fe8 15.♙e3 (D)



15...exd4

GM Korobov, who helps Ushenina during the championship (as she revealed after her win in the semifinals), had tried 15...♙ac8 against Bacrot in Warsaw 2011 at the European rapid championship. 16.♗xd4 ♙h2+N The immediate 16...♙f4 17.♙xf4 ♚xf4 18.♗ce2 and now 18...♚d6± had occurred in Jakovenko-Grachev, Tyumen 2012.

17.♚h1 ♙f4 18.♙xf4 ♚xf4 (D)



19. ♖ce2! ±

Without knowing what exactly Ushenina had prepared, it is hard to judge what's happened, but White's position seems to be promising.

19... ♖b8!?

An important line was 19... ♖xf2 20. ♖f1 ♖e3 21. ♖f3! ♖g5 22. ♖f5 ♖h5 (otherwise ♖g3) 23. ♖d6 ♖e5 24. ♖f5 ♖g3+ 25. ♖xg3 ♖xg3 ± and here White has to decide whether she has to take on e5 (and then on b7) or on e8.

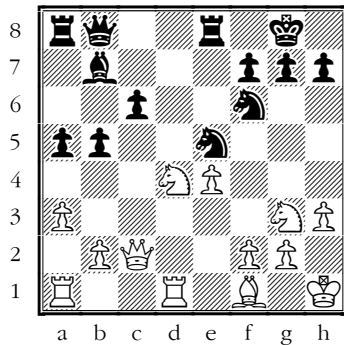
20. ♖g3!?

20. ♖xc6?! would have allowed 20... ♖xc6 21. ♖xc6 ♖e5 22. ♖xb5 ♖xd3 23. ♖xd3 ♖xe4 ⇌ attacking both f2 and b2 pawns simultaneously.

20... ♖e5

Black could have preferred 20... ♖e5. Or even back, 20... ♖f4!?

21. ♖f1 → (D)

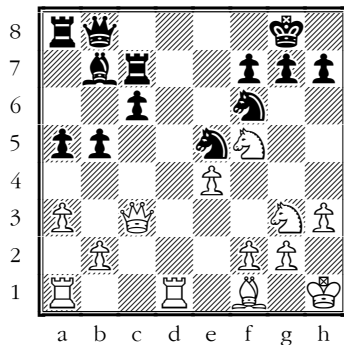


Black is under pressure, but nothing is decided yet. However, now Ushenina makes just a bad move.

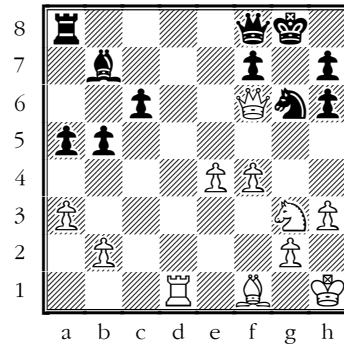
21... ♖c8? 22. ♖d5 ♖c7?

A very strange manoeuvre, to put it mildly. More stubborn would have been to return the rook to e8 (but who is able to play like this?).

23. ♖c3!+- (D)



White is objectively winning already. 23... ♖d7 24. f4! ♖xd1 25. ♖xd1 ♖g6 26. ♖h6+! ♖xh6 27. ♖xf6 ♖f8 (D)



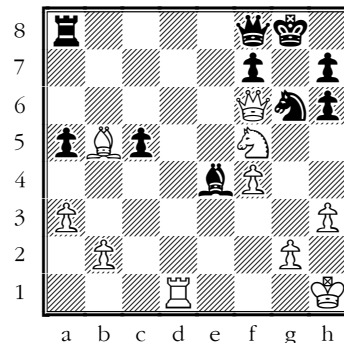
28. ♖f5

An easy win was 28. ♖d7 because 28... ♖c8 loses the queen after 29. ♖d8

28... ♖c5 29. ♖xb5

Here 29. ♖d7 and if 29... ♖xe4 30. ♖xf7! would have been good enough.

29... ♖xe4 (D)



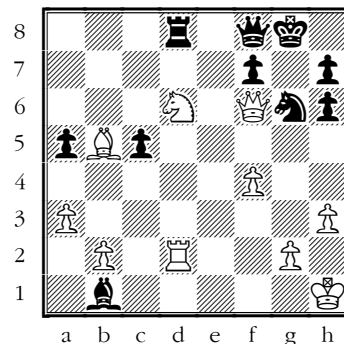
30. ♖d6? ±

Finally, Stefanova makes her task much more complicated. 30. ♖g3!+- would have preserved a totally dominating position.

30... ♖d8! 31. ♖d2!?

Here Black had to retreat the bishop to a8. Her mistake made possible a nice winning combination by White.

31... ♖b1? (D)



32. ♖xf7!!

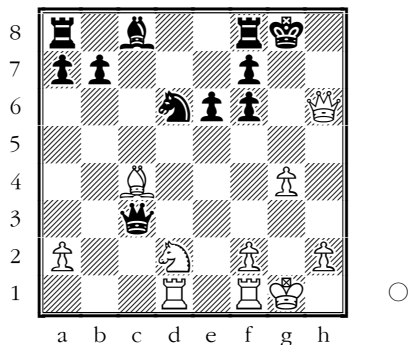
It is pity that there is almost no chance to see such beauty in the men's world championship final.

32...♖xd2 33.♘xh6+

And Black resigned because of
33.♘xh6+ ♔xh6 34.♙c4+ 1-0.

Solution to Our Quiz:

**Yakovich(2525)-Steinbacher
(2385) Ostend Open BEL (4), 1993**



20.♘e4!!+- ♘xe4 21.♖d3 ♙d7
22.♖xc3 ♘xc3 23.♙d3 1-0.

Contact information. Have some comments about Chess Today? [E-mail us](mailto:ababurin@iol.ie) - we appreciate your feedback! **Chess Today** is published by Alexander Baburin, 3 Eagle Hill, Blackrock, Co. Dublin, Ireland. Tel: (353-1) 278-2276.

E-mail: ababurin@iol.ie

Website: <http://www.chesstoday.net>

Editors: GMs Baburin, Scherbakov and Golubev.
Technical editors: Graham Brown, Ivan Baburin and Ralph Marconi.

Chess Today is copyright 2000-2012 by Alexander Baburin and protected intellectual property under the International Copyright convention. Subscribers are allowed to non-commercially distribute copies of Chess Today at their chess club, chess tournaments and via e-mail (on an occasional basis). Any other use and distribution (reproduction, via print, electronic format, or in any form whatsoever), as well as posting on the Web, is strictly prohibited without express written permission.